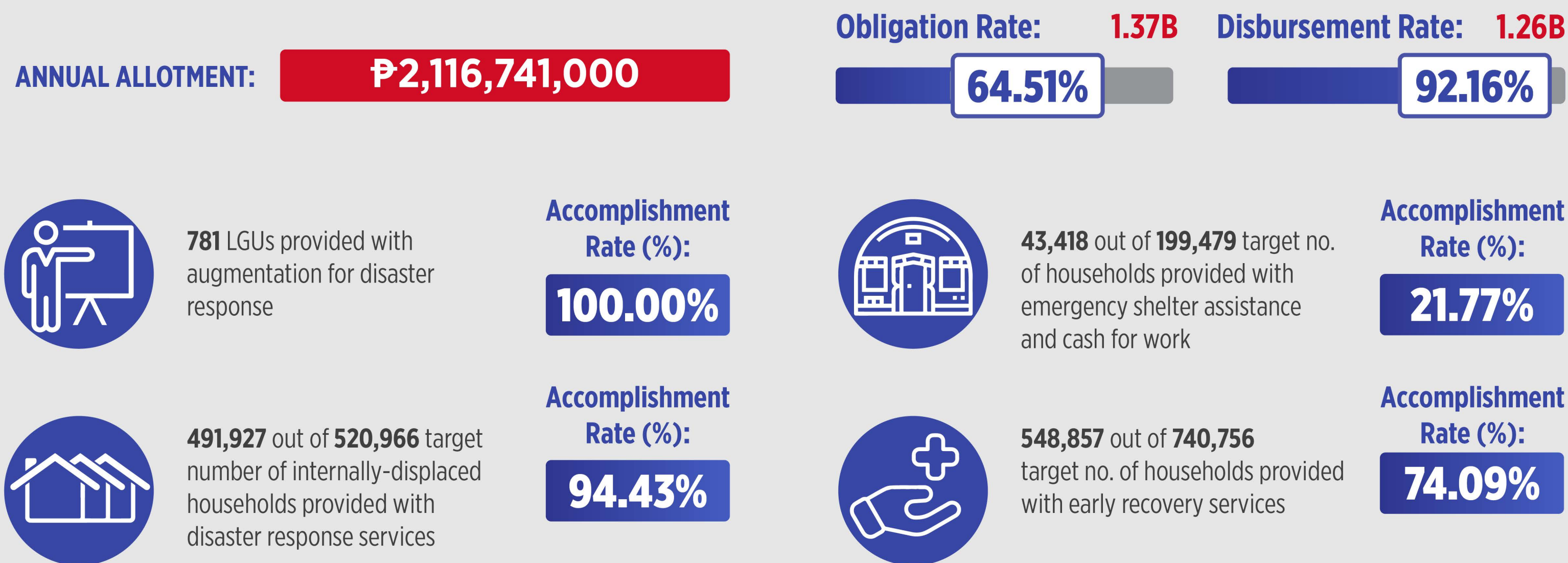
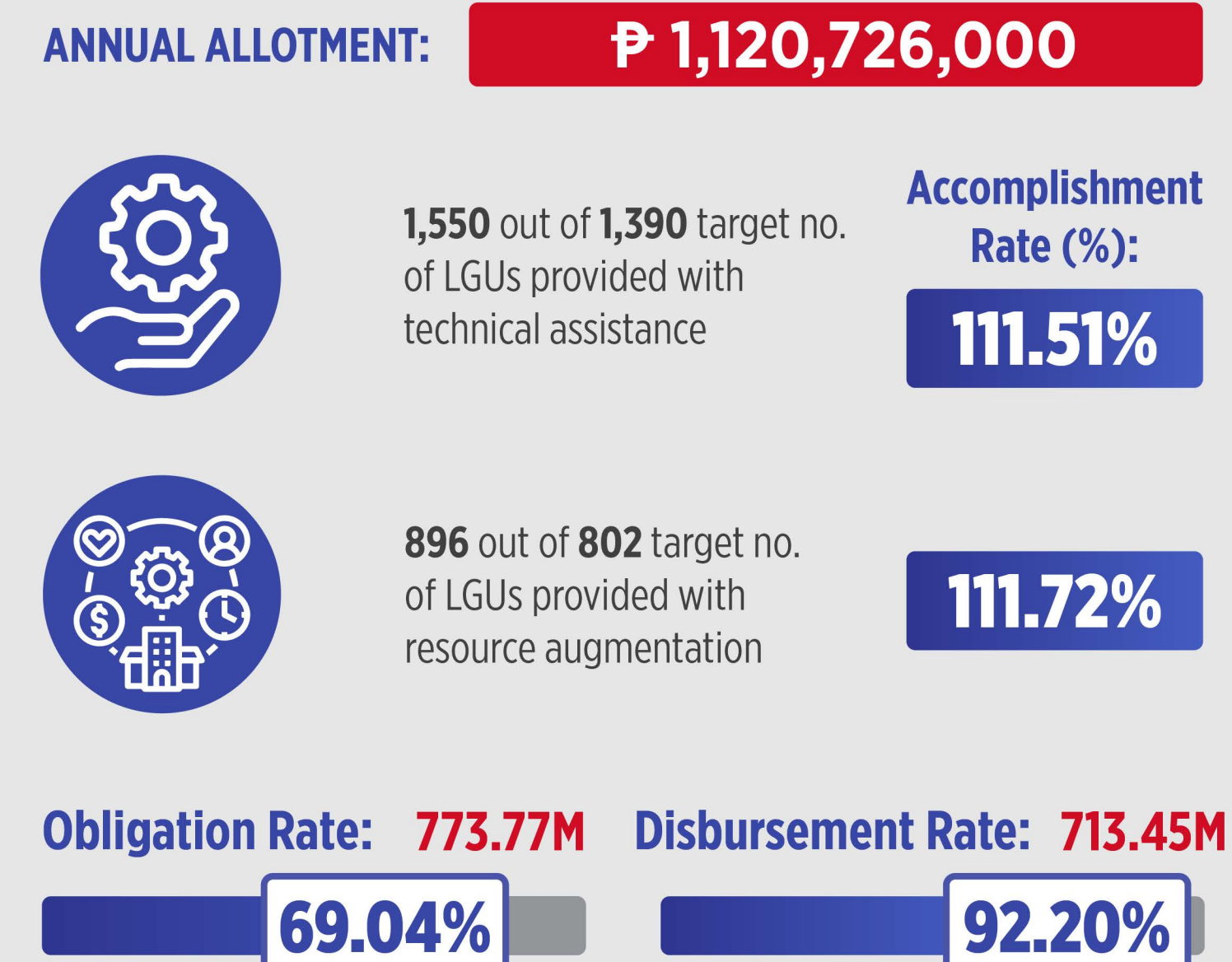


## STRATEGIC FOCUS 1: Increase capacity of LGUs to improve the delivery of social protection and social welfare services.

### DISASTER RESPONSE MANAGEMENT



### TECHNICAL ASSISTANCE AND RESOURCE AUGMENTATION (TARA) PROGRAM



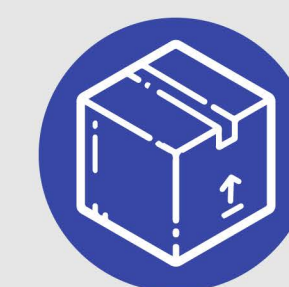
### RESOURCES AND LOGISTICS MANAGEMENT



**1,461,161** family food packs delivered

#### COST OF FAMILY FOOD PACKS DELIVERED:

**₱903,551,691.55**



**2,772,842** non-food items delivered

#### COST OF NON-FOOD ITEMS DELIVERED:

**₱644,747,782.91**



## STRATEGIC FOCUS 2: Improve well-being of beneficiaries and 4Ps households through strengthened social welfare system.

### PANTAWID PAMILYANG PILIPINO PROGRAM (4Ps)

ANNUAL ALLOTMENT:

**₱ 107,669,942,000**

 4,311,285 out of 4,400,000  
target no. of households provided  
with conditional cash grants

 Accomplishment  
Rate (%):

**97.98%**

 Obligation Rate: **48.83B**

 Disbursement Rate: **46.34B**
**45.35%**
**94.91%**

### SUPPLEMENTARY FEEDING PROGRAM


 1,984,923 out of 1,937,378  
target no. of children served

 Accomplishment  
Rate (%):

**102.45%**

 492,102 out of 1,936,868  
target no. of children served

**25.41%**

ANNUAL ALLOTMENT:

**₱4,161,542,000**

 Obligation Rate: **2.65B**

 Disbursement Rate: **1.17B**
**63.65%**
**44.29%**

### SUSTAINABLE LIVELIHOOD PROGRAM (SLP)

ANNUAL ALLOTMENT:

**₱ 4,753,088,000**

 93,525 out of 153,684 target  
no. of households served

 Accomplishment  
Rate (%):

**60.86%**

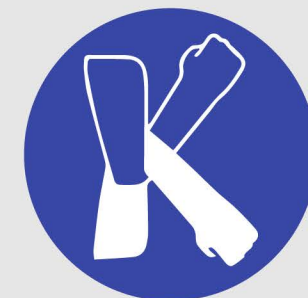
 Obligation Rate: **3.54B**

 Disbursement Rate: **3.29B**
**74.46%**
**92.82%**

### KALAHI CIDDS (KC-NCDDP) National Community-Driven Development Program


 3,663 out of 3,833 target no.  
of subprojects completed

 Accomplishment  
Rate (%):

**95.56%**

 1,624,221 out of 2,500,000  
target no. of households  
benefitting from completed  
subprojects

**64.97%**

ANNUAL ALLOTMENT:

**₱4,698,319,000**

 Obligation Rate: **4.02B**

 Disbursement Rate: **3.43B**
**85.61%**
**85.19%**



## STRATEGIC FOCUS 2: Improve well-being of beneficiaries and 4Ps households through strengthened social welfare system.

### KALAHI CIDDS (KC-KKB)

Kapangyarihan at Kaunlaran sa Barangay

ANNUAL ALLOTMENT:

**₱4,705,310,000**



2,253 out of 2,689 target no. of families served through Balik Probinsya, Bagong Pag-asa Program

Accomplishment  
Rate (%):

**83.79%**

Obligation Rate: **586.20M**

Disbursement Rate: **199.70M**

**12.46%**

**34.07%**

### CENTER AND RESIDENTIAL CARE SERVICES

ANNUAL ALLOTMENT:

**₱2,109,138,000**



1,086 out of 1,234 target no. of clients catered in non-residential care facilities

Accomplishment  
Rate (%):

**88.01%**



6,222 out of 9,766 target no. of clients catered in residential care facilities

**63.71%**

Obligation Rate: **1.33B**

Disbursement Rate: **1.01B**

**63.04%**

**76.08%**

### STANDARDS SETTING , REGISTRATION, LICENSING, ACCREDITATION & MONITORING SERVICES

ANNUAL ALLOTMENT:

**₱65,902,000**



294 out of 97 target no. of social welfare agencies registered

Accomplishment  
Rate (%):

**303.09%**



256 out of 103 target no. of social welfare agencies with license to operate

**248.54%**



126 out of 150 target no. of social welfare agencies accredited

**84.00%**



6,510 out of 5,229 target no. of service providers accredited

**124.50%**



636 out of 200 target no. of beneficiary civil society organizations accredited

**318.00%**

Obligation Rate: **50.69M**

Disbursement Rate: **37.94M**

**76.92%**

**74.85%**

### PROTECTIVE SERVICES

ANNUAL ALLOTMENT:

**₱39,767,070,000**



3,515,705 out of 1,389,339 target no. of individuals in crisis assisted

Accomplishment  
Rate (%):

**253.05%**

### ASSISTANCE TO INDIVIDUALS IN CRISIS SITUATION (AICS)

### ALTERNATIVE FAMILY CARE PROGRAM



217 out of 524 target no. of children placed for domestic adoption

**41.41%**



11 out of 238 target no. of children endorsed/cleared for intercountry adoption

**4.62%**



1,032 out of 1,081 target no. of children placed for foster care

**95.47%**

Obligation Rate: **25.22B**

Disbursement Rate: **23.97B**

**63.43%**

**95.04%**



## STRATEGIC FOCUS 2: Improve well-being of beneficiaries and 4Ps households through strengthened social welfare system.

### BANGSAMORO UMPUNGAN SA NUTRISYON (BangUN) PROJECT



18,657 out of 15,000  
target no. of children served

Accomplishment  
Rate (%):  
**124.38%**



3,343 out of 7,000  
target no. of pregnant  
and lactating women served

**47.76%**

ANNUAL ALLOTMENT:

**₱161,296,000**

Obligation Rate: **131.66M**

**81.63%**

Disbursement Rate: **28.15M**

**21.38%**

### RECOVERY AND REINTEGRATION PROGRAM FOR TRAFFICKED PERSONS

ANNUAL ALLOTMENT:

**₱24,780,000**



1,488 out of 2,000 target no. of  
trafficked persons served

Accomplishment  
Rate (%):  
**74.40%**

Obligation Rate: **14.19M**

**57.26%**

Disbursement Rate: **11.87M**

**83.62%**

### SOCIAL PENSION FOR INDIGENT SENIOR CITIZENS

ANNUAL ALLOTMENT:

**₱25,018,015,000**



3,586,492 out of 4,085,066  
target senior citizens with  
social pension

Accomplishment  
Rate (%):  
**87.80%**

Obligation Rate: **18.83B**

**75.26%**

Disbursement Rate: **18.37B**

**97.55%**

### IMPLEMENTATION OF THE CENTENARIAN ACT

ANNUAL ALLOTMENT:

**₱177,857,000**



1,497 out of 1,704 target  
centenarians with cash gift

Accomplishment  
Rate (%):  
**87.85%**

Obligation Rate: **165.81M**

**93.22%**

Disbursement Rate: **161.49M**

**97.40%**

### INTERNATIONAL SOCIAL WELFARE SERVICES FOR FILIPINO NATIONALS (ISWSFN)

ANNUAL ALLOTMENT:

**₱93,988,000**



13,852 out of 29,253 target  
no. of overseas Filipinos served

Accomplishment  
Rate (%):  
**47.35%**

Obligation Rate: **45.99M**

**48.94%**

Disbursement Rate: **37.10M**

**80.66%**



## STRATEGIC FOCUS 2: Improve well-being of beneficiaries and 4Ps households through strengthened social welfare system.

### COMPREHENSIVE PROGRAM FOR STREET CHILDREN, STREET FAMILIES AND INDIGENOUS PEOPLES, ESP. SAMA BAJAUS



385 out of 2,815  
target no. of children at-risk  
on the streets served

Accomplishment  
Rate (%):  
**13.68%**

ANNUAL ALLOTMENT:

**₱34,924,000**



410 out of 1,210  
target no. of families at-risk  
on the streets served

**33.88%**

Obligation Rate:

**13.03M**

Disbursement Rate: **7.74M**

**37.30%**

**59.39%**

### IMPLEMENTATION OF EXECUTIVE ORDER NO. 70 S. 2018

#### FIRST TRACK:



**3,321**

former rebels provided  
with assistance

#### SECOND TRACK:



**730,829**

individuals assisted



**431,852**

households assisted

### TARGETED CASH TRANSFER PROGRAM

Disbursement: **9.04B**



9,036,011 out of 12,400,000  
target no. of households  
provided with cash grants

Accomplishment  
Rate (%):  
**72.87%**

### YAKAP BAYAN PROGRAM



#### PROVIDED THE FOLLOWING SERVICES:

- 188 RPWUDs served by the program in three (3) model building sites;
- Program activities conducted in Batangas (Region IV-A), Antique (Region VI) and Sarangani (Region XII) as model building sites; and,
- 132 local government units executed a memorandum of agreement to institutionalize the YBP, and 106 local government units trained on program implementation.